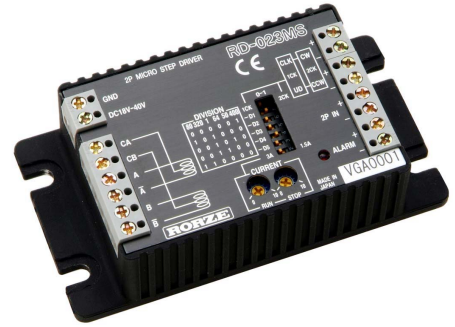


2-PH Microstepping Motor Driver

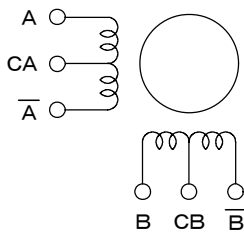
Pulse Input RD-023MS



Suitable Motors

Manufacturer	Model No.
RORZE Co.	RM2B42**, RM26**
OTHER	HB type (PM type) 2-ph stepping motor (4 or 6 lead wires)

Motor Wiring

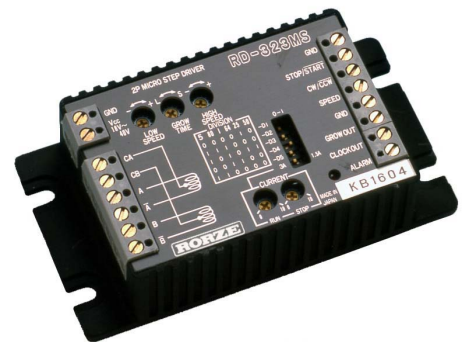


Specifications

Supply voltage	18 to 40VDC (including ripple)
Supply current	Approx. 1.2 times rated coil current of motor (max.)
Motor current	0.3 to 3A/phase
Drive method	Unipolar, constant current chopper method
Microstep resolution	Up to 400 microsteps/step (Selectable 22 possible divisions)
Auto. current down	0 to 80% of the run current after about 0.3 seconds of inactivity according to Stop Current setting
Response frequency	500kpps max.
Protective circuitry	Overheating, over current, & low voltage protection
Outside dimensions	27.5(H) × 105(W) × 56(D)mm
Weight	approx. 250g

2-PH Microstepping Motor Driver

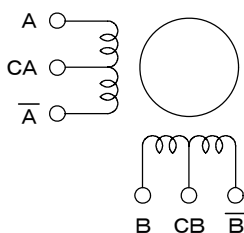
Built-in Pulse Oscillator RD-323MS



Suitable Motors

Manufacturer	Model No.
RORZE Co.	RM2B42**, RM26**
OTHER	HB type (PM type) 2-ph stepping motor (4 or 6 lead wires)

Motor Wiring



Specifications

Supply voltage	18 to 40VDC (including ripple)
Supply current	Approx. 1.2 times rated coil current of motor (max.)
Motor current	0.3 to 3A/phase
Drive method	Unipolar, constant current chopper method
Resolution	Up to 80 microstep/step Selectable clockout 1 to 80 pulses/step
Oscillating frequency	700kpps max.
Speed change function	Analog (Variable by analog voltage of SPEED terminal)
Accel./Decel. time	20msec to 3sec
Protective circuitry	Overheating, over current, & low voltage protection
Outside dimensions	27.5(H) × 105(W) × 56(D)mm
Weight	approx. 250g
Oscillating frequency	700kpps max.