

QuickPanel+™

Operator Interface for Industry 4.0

Streamline your system and simplify development and maintenance with one powerful device for both your operator interface (OI) and control requirements. The QuickPanel+ is a multi-functional device that delivers actionable data and insight—smarter, faster and easier than ever before.

QuickPanel+ integrates process control, view, and an option to run embedded data historian to improve real-time control and simplify integration into plant-wide systems. The QuickPanel+ brings machine interfaces into the Industrial Internet age for new levels of productivity, insight, and user experience.

To succeed in an outcome-driven world, businesses must operate faster and leaner and be increasingly connected. At Emerson, we understand today's connected business environment, and are committed to simplifying it. That's why we've designed an automation architecture that helps you design better machines and plants, operate them smarter, and redefine the interaction with your equipment.

High Performance

With faster processing speeds and more memory, QuickPanel+ delivers high performance control, visualization, and data historian capabilities to maximize productivity and cost efficiency, even in third-party environments.

QuickPanel+ incorporates the latest display and multi-touch technology to enhance the user experience. The capacitive, multi-touch screen is built to last in an industrial environment, yet is as sensitive as the latest smartphone or tablet. The wide screen provides vivid, clear images and more complete process visualization.



Multi-functional Capability

QuickPanel+ provides core capabilities that help users operate in today's connected world. It's an all-in-one OI: an OI/HMI, a PLC/process controller, machine gateway, and a data historian. This combination puts more data at your fingertips, providing instant insight and control while reducing inventory and TCO. Remote programming technology makes it easy to access user accounts through a single access point. A single object-based programming environment means implementation is fast and easy.

Full-Function Browser & Multimedia Access

QuickPanel+ offers a fully-functional HTML5 browser and multimedia support with the Windows EC7 operating system. This results in a new level of versatility for an OI. Users can quickly and easily access the Internet or their intranet to view training videos, compile reports or access other critical information.

Interoperability & Scalability

The plug-and-play interoperability of the QuickPanel+ adds to its ease of use and implementation. Using serial and Ethernet connectivity, it can be used with controllers and I/O from multiple vendors for swift and smooth implementation. Enjoy the functionality of a PC—such as remote desktop, web browser, built-in peer networking and FTP and HTTP servers—without the IT headaches.

QuickPanel+ supports 5 IEC programming languages: Relay Ladder, Sequential Function Chart, Structured Text, Instruction List, and Function Block Diagram. The operator can select multi-language support when the system is online. Configuration is easy—a common database reduces development time by eliminating the need to re-enter tag names, and an extensive library of pre-configured animation objects is provided.

Specifications

Processor Node

- Freescale i.MX535 1GHz based on ARM Cortex A8
- 2D/3D Graphics Processing Unit
- 32KB Level 1 Instruction/Data Caches
- 256KB Level 2 Unified Instruction and Data Cache
- NEON SIMD Media Accelerator
- Vector Floating Point Coprocessor

Memory

- 512MB DDR2 SDRAM
- 256MB SLC NAND Flash
- 512KB Battery Backed SRAM

Display

- 6" TFT LCD
- 320 x 240 Resolution
- Resistive Touch Display

Ethernet Port

- 1x 10/100BaseT (RJ-45)

Serial I/O

- 1x RS-232 COM Port (5-Pin Connector)

USB

- 2x USB 2.0 (Type-A)
- 1x USB 2.0 (Mini Type-B)

Storage

- 1x SD/SDHC Card Slot

Audio

- x1 Mic In (mono) (3.5mm Jack)
- x1 Line Out (stereo) (3.5mm Jack)

Status Indicators

- Tri-color LED (Amber/Green/Red)
- On-board Buzzer

Operating System

- Microsoft® Windows® Embedded Compact 7

Power Requirements

- +24VDC ±20% (3-Pin Connector)
- Max power Consumption: 15W

Physical Specification

- External Dimensions: 192(W) x 137(H) x 36(D) mm
- Weight: 800g

Mounting Option

- Panel Cutout Dimensions: 183.5(W) x 128.5(H) mm
- Panel Mount Brackets Included
- Mounting Gasket
- VESA 75

Environmental

- Cooling Methodology: Natural Convection
- Operating Temp: 0°C to +55°C
- Storage Temp: -10°C to +60°C
- Humidity: 85% RH (non-condensing) @ 30°C

Compliance

- UL Listed US/CAN Hazardous locations: Class 1 Division 2; Class 2 Division 2; Class 3 Division 1 & 2
- UL TYPE 4X
- CE (EN 60950-1, EN 61000-6-4, 61000-6-2)
- FCC Part15 Class A
- IP65F (JEM 1030)
- RoHS

Ordering Information

IC755CSW07CDA	QuickPanel+ View & Control, 7" Color TFT Widescreen with Multi-touch Projected Capacitive Screen, Emerson Bezel, 24 VDC Powered
IC755CSW07CDACA	QuickPanel+ View & Control, 7" Color TFT Widescreen with Multi-touch Projected Capacitive Screen, Emerson Bezel, 24 VDC Powered, Conformal Coated
IC755CBW07CDA	QuickPanel+ View & Control, 7" Color TFT Widescreen with Multi-touch Projected Capacitive Screen, Blank Bezel, 24 VDC Powered
IC755ACC07GAS	QuickPanel+ 7" Replacement Gasket
IC755ACC07MNT	QuickPanel+ 7" Accessory Kit - Replacement Mounting Clips, Power & Serial Port Connectors
IC755ACC07PRO	QuickPanel+ 7" Replacement Gasket
IC755ACCBATT	QuickPanel+ Replacement Battery Pack
IC755ACC07ADP	QuickPanel+ Panel Adapter Kit - 8" QP View/Control to 7" QuickPanel+

Specifications

Processor Node

- Freescale i.MX535 1GHz based on ARM Cortex A8
- 2D/3D Graphics Processing Unit
- 32KB Level 1 Instruction/Data Caches
- 256KB Level 2 Unified Instruction and Data Cache
- NEON SIMD Media Accelerator
- Vector Floating Point Coprocessor

Memory

- 512MB DDR2 SDRAM
- 256MB SLC NAND Flash
- 512KB Battery Backed SRAM

Display

- 7" Widescreen TFT LCD
- 800 x 480 Resolution
- Projected Capacitive Display
- Multi-touch (two-point)

Ethernet Port

- 1x 10/100BaseT (RJ-45)

Serial I/O

- 1x RS-232 COM Port (5-Pin Connector)

USB

- 2x USB 2.0 (Type-A)
- 1x USB 2.0 (Mini Type-B)

Storage

- 1x SD/SDHC Card Slot

Audio

- x1 Mic In (mono) (3.5mm Jack)
- x1 Line Out (stereo) (3.5mm Jack)

Status Indicators

- Tri-color LED (Amber/Green/Red)
- On-board Buzzer

Operating System

- Microsoft® Windows® Embedded Compact 7

Power Requirements

- +24VDC ±20% (3-Pin Connector)
- Max power Consumption: 15W

Physical Specification

- External Dimensions: 192(W) x 137(H) x 36(D) mm
- Weight: 800g

Mounting Option

- Panel Cutout Dimensions: 183.5(W) x 128.5(H) mm
- Panel Mount Brackets Included
- Mounting Gasket
- VESA 75

Environmental

- Cooling Methodology: Natural Convection
- Operating Temp: 0°C to +55°C
- Storage Temp: -10°C to +60°C
- Humidity: 85% RH (non-condensing) @ 30°C

Compliance

- UL Listed US/CAN Hazardous locations: Class 1 Division 2
- UL TYPE 4X
- CE (EN 60950-1, EN 61000-6-4, 61000-6-2)
- FCC Part15 Class A
- IP65F (JEM 1030)
- DNV Marine Certification – Approved on IC755CSW07CDACA
- RoHS

Ordering Information

IC755CSW07CDA	QuickPanel+ View & Control, 7" Color TFT Widescreen with Multi-touch Projected Capacitive Screen, Emerson Bezel, 24 VDC Powered
IC755CSW07CDACA	QuickPanel+ View & Control, 7" Color TFT Widescreen with Multi-touch Projected Capacitive Screen, Emerson Bezel, 24 VDC Powered, Conformal Coated
IC755CBW07CDA	QuickPanel+ View & Control, 7" Color TFT Widescreen with Multi-touch Projected Capacitive Screen, Blank Bezel, 24 VDC Powered
IC755ACC07GAS	QuickPanel+ 7" Replacement Gasket
IC755ACC07MNT	QuickPanel+ 7" Accessory Kit - Replacement Mounting Clips, Power & Serial Port Connectors
IC755ACC07PRO	QuickPanel+ 7" Replacement Gasket
IC755ACCBATT	QuickPanel+ Replacement Battery Pack
IC755ACC07ADP	QuickPanel+ Panel Adapter Kit - 8" QP View/Control to 7" QuickPanel+

Specifications

Processor Node

- Freescale i.MX535 1GHz based on ARM Cortex A8
- 2D/3D Graphics Processing Unit
- 32KB Level 1 Instruction/Data Caches
- 256KB Level 2 Unified Instruction and Data Cache
- NEON SIMD Media Accelerator
- Vector Floating Point Coprocessor

Memory

- 1GB DDR3 SDRAM
- 512MB SLC NAND Flash
- 512KB Battery Backed SRAM

Display

- 10" TFT LCD
- 800 x 600 Resolution
- Projected Capacitive Display
- Multi-touch (two-point)

Ethernet Port

- 2x 10/100BaseT (RJ-45)

Serial I/O

- 1x RS-232 (5-Pin Connector), 1x RS-485 COM Ports (5-Pin Connector)

USB

- 2x USB 2.0 (Type-A)
- 1x USB 2.0 (Mini Type-B)

Storage

- 1x SD/SDHC Card Slot

Audio

- x1 Mic In (mono) (3.5mm Jack)

Status Indicators

- Tri-color LED (Amber/Green/Red)
- On-board Buzzer

Operating System

- Microsoft® Windows® Embedded Compact 7

Power Requirements

- +12/24VDC ±20% (3-Pin Connector)
- Max power Consumption: 30W

Physical Specification

- External Dimensions: 278(W) x 222(H) x 65(D) mm
- Weight: 2.4 Kg

Mounting Option

- Panel Cutout Dimensions: 266(W) x 210(H)
- Panel Mount Brackets Included
- Mounting Gasket
- VESA 100

Environmental

- Cooling Methodology: Natural Convection
- Operating Temp: 0°C to +55°C
- Storage Temp: -10°C to +60°C
- Humidity: 85% RH (non-condensing) @ 30°C

Compliance

- UL Listed US/CAN Hazardous locations: Class 1 Division 2
- UL TYPE 4X
- CE (EN 60950-1, EN 61000-6-4, 61000-6-2)
- FCC Part15 Class A
- IP65F (JEM 1030)
- DNV Marine Certification – Approved on IC755CSW07CDACA
- RoHS

Ordering Information

IC755CSS10CDA	QuickPanel+ View & Control, 10" Color TFT with Multi-touch Projected Capacitive Screen, Emerson Bezel, 24 VDC Powered
IC755CBS10CDA	QuickPanel+ View & Control, 10" Color TFT with Multi-touch Projected Capacitive Screen, Blank Bezel, 24 VDC Powered
IC755ACC10GAS	QuickPanel+ 10" Replacement Gasket
IC755ACC10MNT	QuickPanel+ 10" Accessory Kit - Replacement Mounting Clips, Power & Serial Port Connectors
IC755ACC10PRO	QuickPanel+ 7 10" Replacement Screen Protectors, Package of 3
IC755ACCBATTNL	Replacement Battery (No Leads), for use with 10", 12", and 15"

Specifications

Processor Node

- Freescale i.MX535 1GHz based on ARM Cortex A8
- 2D/3D Graphics Processing Unit
- 32KB Level 1 Instruction/Data Caches
- 256KB Level 2 Unified Instruction and Data Cache
- NEON SIMD Media Accelerator
- Vector Floating Point Coprocessor

Memory

- 1GB DDR3 SDRAM
- 512MB SLC NAND Flash
- 512KB Battery Backed SRAM

Display

- 12" TFT LCD
- 800 x 600 SVGA Resolution
- Projected Capacitive Display
- Multi-touch (two-point)

Ethernet Port

- 1x 10/100BaseT (RJ-45) on IC755CxS12CDA
- 2x 10/100BaseT (RJ-45) on IC755CxS12CDB

Serial I/O

- 1x RS-232, 1x RS-485 COM Ports (10-Pin Connector) on IC755CxS12CDA
- 1x RS-232, 1x RS-485 COM Ports (two 5-Pin Connectors) on IC755CxS12CDB

USB

- 2x USB 2.0 (Type-A)
- 1x USB 2.0 (Mini Type-B)

Storage

- 1x SD/SDHC Card Slot

Audio

- x1 Line Out (stereo) (3.5mm Jack)

Status Indicators

- Tri-color LED (Amber/Green/Red)
- On-board Buzzer

Operating System

- Microsoft® Windows® Embedded Compact 7

Power Requirements

- +12/24VDC \pm 20% (3-Pin Connector)
- Max power Consumption: 30W

Physical Specification

- External Dimensions: 314(W) x 248(H) x 65(D) mm
- Weight: 3Kg

Mounting Option

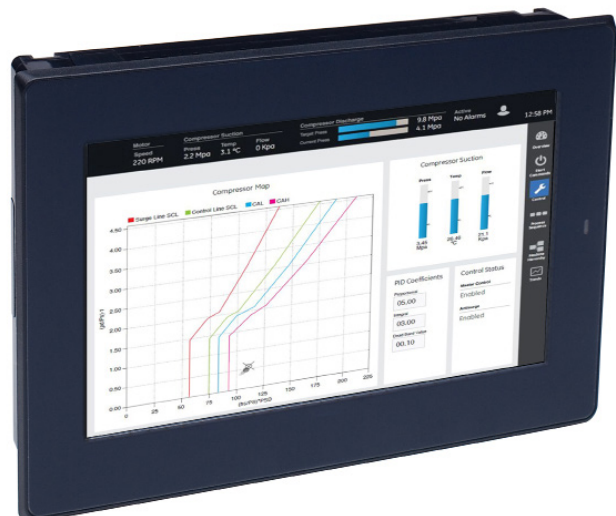
- Panel Cutout Dimensions: 302(W) x 228(H) mm
- Panel Mount Brackets Included
- Mounting Gasket
- VESA 100

Environmental

- Cooling Methodology: Natural Convection
- Operating Temp: 0°C to +55°C
- Storage Temp: -10°C to +60°C
- Humidity: 85% RH (non-condensing) @ 30°C

Compliance

- UL Listed US/CAN Hazardous locations: Class 1 Division 2
- UL TYPE 4X
- CE (EN 60950-1, EN 61000-6-4, 61000-6-2)
- FCC Part15 Class A
- IP65F (JEM 1030)
- RoHS



Ordering Information

IC755CSS12CDA	QuickPanel ⁺ View & Control, 12" Color TFT with Multi-touch Projected Capacitive Screen, single Ethernet port, Emerson Bezel, 24 VDC Powered. Note: This model has been replaced with IC755CSS12CDB
IC755CSS12CDA	QuickPanel ⁺ View & Control, 12" Color TFT with Multi-touch Projected Capacitive Screen, single Ethernet port, Blank Bezel, 24 VDC Powered. Note: This model has been replaced with IC755CBS12CDB
IC755CSS12CDB	QuickPanel ⁺ View & Control, 12" Color TFT with Multi-touch Projected Capacitive Screen, dual Ethernet ports, Emerson Bezel, 24 VDC Powered
IC755CBS12CDB	QuickPanel ⁺ View & Control, 12" Color TFT with Multi-touch Projected Capacitive Screen, dual Ethernet ports, Blank Bezel, 24 VDC Powered
IC755CSS12CDBCA	QuickPanel ⁺ View & Control, 12" Color TFT with Multi-touch Projected Capacitive Screen, dual Ethernet ports, Emerson Bezel, 24 VDC Powered, Conformal Coated
IC755ACC12GAS	QuickPanel ⁺ 12" Replacement Gasket
IC755ACC12MNT	QuickPanel ⁺ 12" Accessory Kit - Replacement Mounting Clips, Power & Serial Port Connectors
IC755ACC12PRO	QuickPanel ⁺ 12" Replacement Screen Protectors, Package of 3
IC755ACCBATTNL	Replacement Battery (No Leads), for use with 12"

Specifications

Processor Node

- Freescale i.MX535 1GHz based on ARM Cortex A8
- 2D/3D Graphics Processing Unit
- 32KB Level 1 Instruction/Data Caches
- 256KB Level 2 Unified Instruction and Data Cache
- NEON SIMD Media Accelerator
- Vector Floating Point Coprocessor

Memory

- 1GB DDR3 SDRAM
- 512MB SLC NAND Flash
- 512KB Battery Backed SRAM

Display

- 15" TFT LCD
- 1024 x 768 SVGA Resolution
- Projected Capacitive Display
- Multi-touch (two-point)

Ethernet Port

- 2x 10/100BaseT (RJ-45)

Serial I/O

- 1x RS-232 (5-Pin Connector), 1x RS-485 COM Ports (5-Pin Connector)

USB

- 2x USB 2.0 (Type-A)
- 1x USB 2.0 (Mini Type-B)

Storage

- 1x SD/SDHC Card Slot

Audio

- x1 Line Out (stereo) (3.5mm Jack)

Status Indicators

- Tri-color LED (Amber/Green/Red)
- On-board Buzzer

Operating System

- Microsoft® Windows® Embedded Compact 7

Power Requirements

- +12/24VDC ±20% (3-Pin Connector)
- Max power Consumption: 30W

Physical Specification

- External Dimensions: 399(W) x 323(H) x 70(D) mm
- Weight: 4.5Kg

Mounting Option

- Panel Cutout Dimensions: 379(W) x 305(H) mm
- Panel Mount Brackets Included
- Mounting Gasket
- VESA 100

Environmental

- Cooling Methodology: Natural Convection
- Operating Temp: 0°C to +55°C
- Storage Temp: -10°C to +60°C
- Humidity: 85% RH (non-condensing) @ 30°C

Compliance

- UL Listed US/CAN Hazardous locations: Class 1 Division 2
- UL TYPE 4X
- CE (EN 60950-1, EN 61000-6-4, 61000-6-2)
- FCC Part15 Class A
- IP65F (JEM 1030)
- RoHS

Ordering Information

IC755CSS15CDA	QuickPanel+ View & Control, 15" Color TFT with Multi-touch Projected Capacitive Screen, Emerson Bezel, 24 VDC Powered
IC755CBS15CDA	QuickPanel+ View & Control, 15" Color TFT with Multi-touch Projected Capacitive Screen, Emerson Bezel, 24 VDC Powered
IC755ACC15GAS	QuickPanel+ 15" Replacement Gasket
IC755ACC15MNT	QuickPanel+ 15" Accessory Kit - Replacement Mounting Clips, Power & Serial Port Connectors
IC755ACC15PRO	QuickPanel+ 15" Replacement Screen Protectors, Package of 3
IC755ACCBATTNL	Replacement Battery (No Leads), for use with 10", 12", and 15"

United States Office

Emerson Automation Solutions
Intelligent Platforms, LLC
2500 Austin Dr
Charlottesville, VA

Germany Office

Emerson Automation Solutions
ICC Intelligent Platforms
GmbH
Memminger Straße 14
Augsburg, DE 86159

China Office:

Emerson Automation Solutions Intelligent
Platforms (Shanghai) Co., Ltd
No.1277, Xin Jin Qiao Rd, Pudong,
Shanghai, China, 201206

Brazil Office:

Emerson Automation Solutions
Rua Irmã Gabriela, 51 – Cidade Monções
São Paulo – SP, 04571-130

Singapore Office

Emerson Automation Solutions Intelligent
Platforms Asia Pacific Pte. Ltd.
1 Pandan Cres,
Singapore, 128461

India Office

Emerson Automation Solutions
Intelligent Platforms Pvt. Ltd.,
Building No.8, Ground Floor Velankani Tech Park, No.43
Electronics City Phase I, Hosur Rd

©2019 Emerson. All rights reserved.

The Emerson logo is a trademark and service mark of Emerson Electric Co. [Brand name] is a mark of one of the Emerson Automation Solutions family of business units. All other marks are property of their respective owners.

The contents of this publication are presented for information purposes only, and while effort has been made to ensure their accuracy, they are not to be construed as warranties or guarantees, express or implied, regarding the products or services describe herein or their use or applicability. All sales are governed by our terms and conditions, which are available on request. We reserve the right to modify or improve the designs or specifications of our products an any time without notice.

