



1769-L35E CompactLogix™ Controller

(Catalog Numbers 1769-L35E)

Inside...

Before You Begin	3
How to Handle CompactLogix Components	3
Make Sure that You Have All the Components	3
System Planning	4
Installation Steps	4
Connect the 1769-BA Battery	5
Install a 1784-CF64 Industrial CompactFlash Card (optional)	6
Assemble the System	7
Mount the System	8
Make RS-232 Connections to the Controller	11
Make Ethernet Connections to the Controller	14
Install the Appropriate EDS Files	18
Load the Controller Firmware	20
Load 1769-SDN Firmware	22
Select the Controller's Operating Mode	23
Controller LEDs	24
Specifications	28
Certifications	29
Additional Information	31

Important User Information



Because of the variety of uses for the products described in this publication, those responsible for the application and use of these products must satisfy themselves that all necessary steps have been taken to assure that each application and use meets all performance and safety requirements, including any applicable laws, regulations, codes and standards. In no event will Rockwell Automation be responsible or liable for indirect or consequential damage resulting from the use or application of these products.

Any illustrations, charts, sample programs, and layout examples shown in this publication are intended solely for purposes of example. Since there are many variables and requirements associated with any particular installation, Rockwell Automation does not assume responsibility or liability (to include intellectual property liability) for actual use based upon the examples shown in this publication.

Allen-Bradley publication SGI-1.1, *Safety Guidelines for the Application, Installation and Maintenance of Solid-State Control* (available from your local Rockwell Automation office), describes some important differences between solid-state equipment and electromechanical devices that should be taken into consideration when applying products such as those described in this publication.

Reproduction of the contents of this copyrighted publication, in whole or part, without written permission of Rockwell Automation, is prohibited.

Throughout this publication, notes may be used to make you aware of safety considerations. The following annotations and their accompanying statements help you to identify a potential hazard, avoid a potential hazard, and recognize the consequences of a potential hazard:

<p>WARNING</p> 	<p>Identifies information about practices or circumstances that can cause an explosion in a hazardous environment, which may lead to personal injury or death, property damage, or economic loss.</p>
<p>ATTENTION</p> 	<p>Identifies information about practices or circumstances that can lead to personal injury or death, property damage, or economic loss.</p>
<p>IMPORTANT</p>	<p>Identifies information that is critical for successful application and understanding of the product.</p>

Before You Begin

Use this document as a guide for installing and powering-up your 1769-L35E CompactLogix controller. You should already be familiar with the system components.

You must FLASH upgrade the firmware on your CompactLogix controller before you can use it. The controller ships with firmware revision 1.x but must be upgraded to match the version of RSLogix 5000 that you are using (e.g. if you are using RSLogix 5000 V12, you must upgrade your CompactLogix controller firmware to revision 12.x before using it. For more information on upgrading your controller's firmware, see page 20.

How to Handle CompactLogix Components

ATTENTION



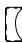

Preventing Electrostatic Discharge

This equipment is sensitive to electrostatic discharge, which can cause internal damage and affect normal operation. Follow these guidelines when you handle this equipment:

- Touch a grounded object to discharge potential static.
- Wear an approved grounding wriststrap.
- Do not touch connectors or pins on component boards.
- Do not touch circuit components inside the equipment.
- If available, use a static-safe workstation.
- When not in use, store the equipment in appropriate static-safe packaging.

Make Sure that You Have All the Components

These components ship with the controller:

Component:	Description:
	1769-BA battery Important: The 1769-BA battery is the only battery you can use with the 1769-L35E controller.
	1747-KY controller key

You may also use these components with the controller:

If you want to:	Then use this component:
connect a device to the RS-232 port	1756-CP3 or 1747-CP3 serial cable
connect a device to the EtherNet/IP port	standard Ethernet cable with RJ-45 connector
Add nonvolatile memory	1784-CF64 Industrial CompactFlash card



System Planning

Consider the following when planning your CompactLogix system:

- The CompactLogix controller is always the left-most module in the system.
- The controller must be located within four modules of the system power supply. Some I/O module's may be located up to 8 modules away from the power supply. See the documentation for your 1769 I/O modules for details.
- The 1769-L35E controller supports up to 30 I/O modules in a maximum of 3 I/O banks (2 expansion cables allowed).
- Each I/O bank requires its own power supply.
- Only one controller can be used in a CompactLogix system.
- A 1769-ECR (right end cap) or 1769-ECL (left end cap) is required to terminate the end of the communication bus.

Installation Steps

✓	Installation Step:	See Page:
<input type="checkbox"/>	1. Connect the battery	5
<input type="checkbox"/>	2. Install the 1784-CF64 CompactFlash card (optional)	6
<input type="checkbox"/>	3. Assemble the system	7
<input type="checkbox"/>	4. Mount the system	8
<input type="checkbox"/>	5. Make serial connections	11
<input type="checkbox"/>	6. Make Ethernet connections	14
<input type="checkbox"/>	7. Install the appropriate EDS files	18
<input type="checkbox"/>	8. Load controller firmware	20

Connect the 1769-BA Battery

The controller is shipped with the 1769-BA battery packed separately. To connect the battery, follow the procedure shown below.

ATTENTION



The 1769-BA battery is the only battery you can use with the 1769-L35E controller. The 1747-BA battery is not compatible with the 1769-L35E controller and may cause problems.

1. Slide the battery door forward.

IMPORTANT

Do not remove the plastic insulation covering the battery. The insulation is necessary to protect the battery contacts.

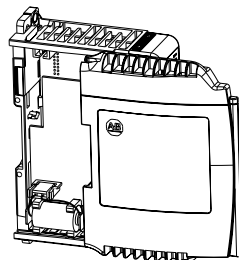
2. Insert the battery into the battery port. Insert the battery connector into the connector port. The connector is keyed to engage in the correct polarity.
3. Slide the battery door back until it clicks into position.

WARNING



When you connect or disconnect the battery an electrical arc can occur. This could cause an explosion in hazardous location installations. Be sure that power is removed or the area is nonhazardous before proceeding.

For Safety information on the handling of lithium batteries, including handling and disposal of leaking batteries, see Guidelines for Handling Lithium Batteries, publication AG 5-4.



Install a 1784-CF64 Industrial CompactFlash Card (optional)

ATTENTION



Do not remove the CompactFlash card while the controller is reading from or writing to the card, as indicated by a flashing green CF LED. This could corrupt the data on the card or in the controller, as well as corrupt the latest firmware in the controller.

A 1784-CF64 Industrial CompactFlash card provides nonvolatile memory for a 1769-L35E controller. This is an optional feature and is not required to operate the controller. Install the card as follows:

1. Push the locking tab to the right and insert the 1784-CF64 Industrial CompactFlash card into the socket on the front of the controller.

The label of the CompactFlash card faces towards the left. Match the orientation arrow on the card with the arrow on the front of the controller.

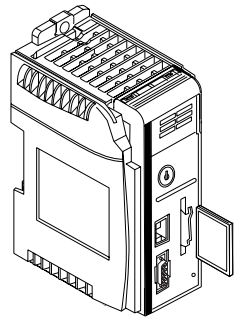
The CompactFlash card support removal and insertion under power.

WARNING



When you insert or remove the card while backplane power is on, an electrical arc can occur. This could cause an explosion in hazardous location installations.

Be sure that power is removed or the area is nonhazardous before proceeding. Repeated electrical arcing causes excessive wear to contacts on both the module and its mating connector. Worn contacts may create electrical resistance that can affect module operation.



To remove the CompactFlash card, push the locking tab away from the CompactFlash card and pull the CompactFlash card from the socket.

Assemble the System

The controller can be attached to an adjacent I/O module or power supply *before or after* mounting. For mounting instructions, see Panel mounting on page 10 or DIN rail mounting on page 10.

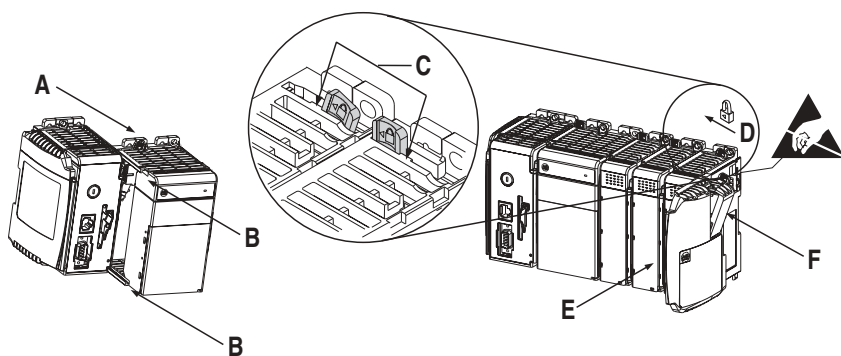
WARNING



If you connect or disconnect the communications cable while power is applied to this module or the wiring while the field-side power is on, an electrical arc can occur. This could cause an explosion in hazardous location installations.

Be sure that power is removed or the area is nonhazardous before proceeding.

The following procedure shows you how to install the controller in a CompactLogix system.



1. Disconnect line power.
2. Check that the lever of the adjacent module (A) is in the unlocked (fully right) position.
3. Use the upper and lower tongue-and-groove slots (B) to secure the modules together.
4. Move the module back along the tongue-and-groove slots until the bus connectors line up with each other.
5. Use your fingers or a small screwdriver to push the module's bus lever back slightly to clear the positioning tab (C).

6. Move the module's bus lever fully to the left (D) until it clicks. Ensure it is locked firmly in place.

ATTENTION



When attaching the controller, power supply, and I/O modules, make sure the bus connectors are securely locked together to ensure proper electrical connection.

7. Attach an end cap terminator (E) to the last module in the system by using the tongue-and-groove slots as before.
8. Lock the end cap bus terminator (F).

Mount the System

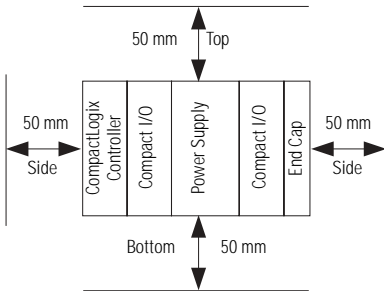
ATTENTION



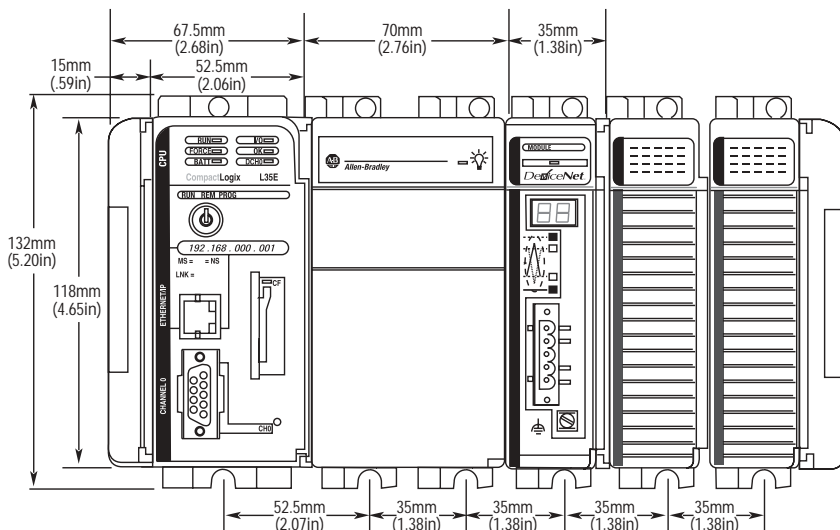
During panel or DIN rail mounting of all devices, be sure that all debris (metal chips, wire strands, etc.) is kept from falling into the controller. Debris that falls into the controller could cause damage while the controller is energized.

Minimum spacing

Maintain spacing from enclosure walls, wireways, adjacent equipment, etc. Allow 50 mm (2 in.) of space on all sides, as shown. This provides ventilation and electrical isolation.



System dimensions



30516-M

NOTE: All dimensions are in mm (in.).
Hole spacing tolerance: ± 0.4 mm (0.016 in.)

TIP

Compact I/O expansion cables have the same dimensions as the end caps. Expansion cables can be used on either the right or left end. A 1769-ECR (right end cap) or 1769-ECL (left end cap) terminates the end of the communication bus.

Panel mounting

Mount the controller to a panel using two screws per module. Use M4 or #8 panhead screws. Mounting screws are required on every module.

The following procedure allows you to use the assembled modules as a template for drilling holes in the panel. Due to module mounting hole tolerance, it is important to follow these procedures:

1. On a clean work surface, assemble no more than three modules.
2. Using the assembled modules as a template, carefully mark the center of all module-mounting holes on the panel.
3. Return the assembled modules to the clean work surface, including any previously mounted modules.
4. Drill and tap the mounting holes for the recommended M4 or #8 screw.
5. Place the modules back on the panel and check for proper hole alignment.
6. Attach the modules to the panel using the mounting screws.

TIP

If mounting more modules, mount only the last one of this group and put the others aside. This reduces remounting time during drilling and tapping of the next group.

7. Repeat steps 1 to 6 for any remaining modules.

DIN rail mounting

The controller can be mounted using the following DIN rails:

- 35 x 7.5 mm (EN 50 022 - 35 x 7.5)
- 35 x 15 mm (EN 50 022 - 35 x 15)

Before mounting the controller on a DIN rail, close the DIN rail latches. Press the DIN rail mounting area of the controller against the DIN rail. The latches will momentarily open and lock into place.

Grounding considerations

This product is intended to be mounted to a well-grounded mounting surface such as a metal panel. Additional grounding connections from the controller's mounting tabs or DIN rail (if used), are not required unless the mounting surface cannot be grounded. Refer to *Industrial Automation Wiring and Grounding Guidelines*, Allen-Bradley publication 1770-4.1, for additional information.

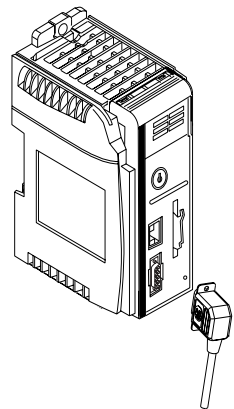
ATTENTION



This product is grounded through the DIN rail to chassis ground. Use zinc plated yellow-chromate steel DIN rail to assure proper grounding. The use of other DIN rail materials (e.g. aluminum, plastic, etc.) that can corrode, oxidize, or are poor conductors, can result in improper or intermittent grounding.

Make RS-232 Connections to the Controller

Connect the 9-pin female end of the serial cable to the serial port (bottom port, CH0) of the controller. The following illustrations show how to connect a serial cable to the controller.

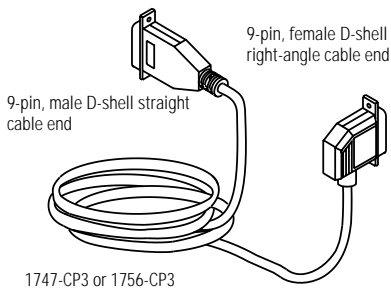


WARNING

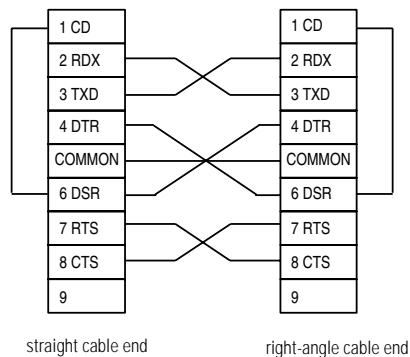


If you connect or disconnect the serial cable with power applied to this module or the serial device on the other end of the cable, an electrical arc can occur. This could cause an explosion in hazardous location installations.

Be sure that power is removed or the area is nonhazardous before proceeding.



This cable must be shielded and tied to the connector housing.



Default serial configuration

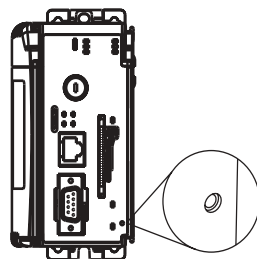
Channel 0 (serial) has the following default communication configuration.

Parameter	Default
Protocol	DF1 full-duplex
Baud Rate	19.2K
Parity	none
Station Address	0
Control Lines	no handshaking
Error Detection	BCC
Embedded Responses	auto detect
Duplicate Packet (Message) Detect	enabled
ACK Timeout	50 (x 20 ms)
NAK Receive Limit	3 retries
ENQ Transmit Limit	3 retries
Data Bits	8
Stop Bits	1

Using the channel 0 default communication push button

The Channel 0 Default Communication Push Button is located on the front of the controller in the lower right corner as shown in the illustration below.

Use the Channel 0 Default Communication Push Button to change from the user-defined communication configuration to the default communications mode. The Channel 0 Default Communications (DCH0) LED turns on (green, steady) to show when the default communication configuration is active.



TIP

- The Default Communication Push Button is recessed.
- Before pressing the Default Communication Push Button, be sure to note the present communication configuration for Channel 0. Pushing the Default Communication Push Button resets all configured parameters back to their default settings. To return the channel to its user-configured parameters, you must enter them manually while online with the controller or download them as part of an RSLogix 5000 Project file. To accomplish this online using RSLogix 5000, enter the Controller Properties screen and use the Serial Port, System Protocol and User Protocol tabs.

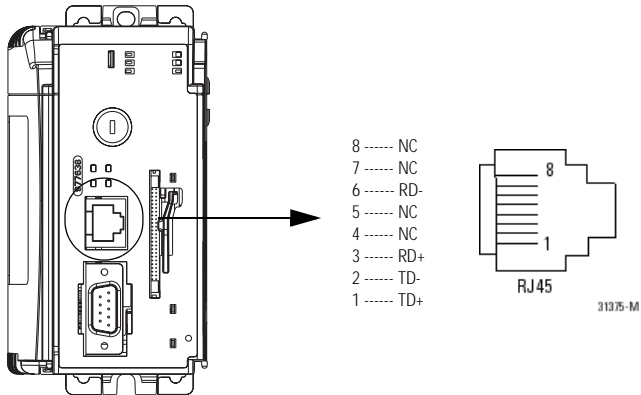
Make Ethernet Connections to the Controller

The 1769-L35E controller ships with BOOTP enabled. You must assign an IP address to the Ethernet port in order for the controller to communicate over an EtherNet/IP network. Connect the RJ-45 connector of the Ethernet cable to the Ethernet port (top port, CH1) on the controller.

ATTENTION



Do not plug a DH-485 network cable or a NAP port cable into the Ethernet port. Undesirable behavior and/or damage to the port may result.



Assign an IP address

You can set the IP address using either of these utilities:

- Rockwell BOOTP Utility (available with RSLinx and RSLogix 5000 software)
- RSLinx software
- RSLogix 5000 software

Using BOOTP to set the IP address

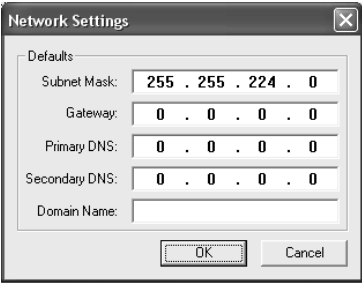
The BOOTP utility is a stand alone program that is located in the:

- RSLinx Tools directory in the Rockwell Software program folder on the Start menu (the utility is automatically installed when you install RSLinx software)
- Utils directory on the RSLogix 5000 installation CD.

To use the BOOTP utility.

1. Start the BOOTP software.
2. Select Tool → Network Settings.

Enter the Ethernet mask and gateway. Click OK.



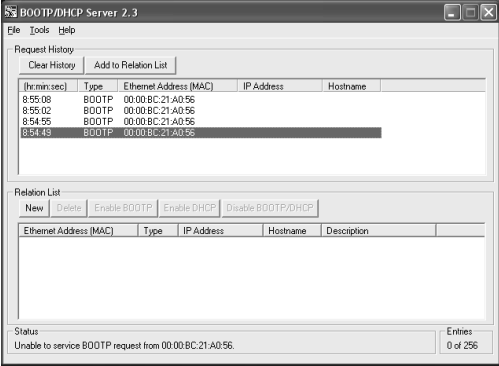
The Network Settings dialog box is titled "Network Settings" and has a close button (X) in the top right corner. It contains a "Defaults" section with the following fields:

- Subnet Mask: 255 . 255 . 224 . 0
- Gateway: 0 . 0 . 0 . 0
- Primary DNS: 0 . 0 . 0 . 0
- Secondary DNS: 0 . 0 . 0 . 0
- Domain Name: (empty text box)

At the bottom of the dialog are "OK" and "Cancel" buttons.

3. In the BOOTP Request History panel you see the hardware addresses of devices issuing BOOTP requests. Double-click on the hardware address of the device you want to configure.

The hardware address is on the sticker located on the left-side circuit board of the controller next to the battery. See Connect the 1769-BA Battery on page 5 for instructions on accessing this area. The hardware address will be in this format: 00-0b-db-14-55-35.



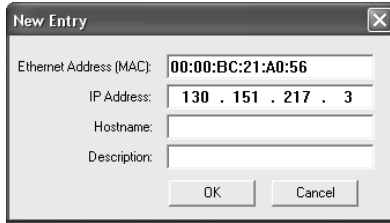
The BOOTP/DHCP Server 2.3 interface shows a "Request History" table with the following data:

(hr:min:sec)	Type	Ethernet Address (MAC)	IP Address	Hostname
8:55:08	BOOTP	00:00:BC:21:A0:56		
8:55:02	BOOTP	00:00:BC:21:A0:56		
8:54:55	BOOTP	00:00:BC:21:A0:56		
8:54:43	BOOTP	00:00:BC:21:A0:56		

Below the table is a "Relation List" section with buttons for "New", "Delete", "Enable BOOTP", "Enable DHCP", and "Disable BOOTP/DHCP". The "Relation List" table is currently empty.

At the bottom, the "Status" bar shows: "Unable to service BOOTP request from 00:00:BC:21:A0:56." and "Entries: 0 of 256".

- The New Entry window appears with the device's Ethernet Address (MAC). Enter the IP address. Click OK.

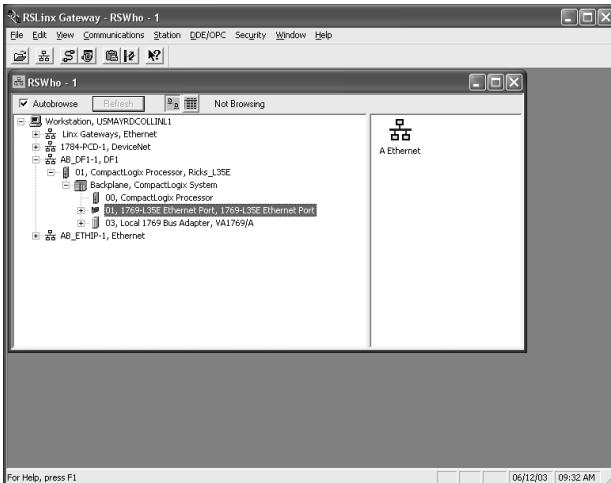


- To permanently assign this configuration to the device, highlight the device and click on the Disable BOOTP/DHCP button. When power is recycled, the device uses the configuration you assigned and not issue a BootP request.

Using RSLinx software to set the IP address

You can use RSLinx software, version 2.41 or higher, to set the IP address.

- Make sure the controller that uses the IP address is installed and running.
- Connect to the controller via the serial connection (see page 11).
- Start RSLinx. The RSWho window opens. Navigate in RSWho to the Ethernet network.
- Right-click on the Ethernet port (not the controller) and select Module Configuration



5. Select the Port Configuration tab, choose the Status Network Configuration type, and enter the IP address, network (subnet) mask, and gateway address (if needed).

The screenshot shows the '1769-ENB Configuration' dialog box with the 'Port Configuration' tab selected. The 'Network Configuration Type' is set to 'Static'. The 'IP Address' is 10.88.60.120, 'Network Mask' is 255.255.254.0, and 'Gateway Address' is 10.88.60.1. The 'Status' field shows 'Network Interface Configured'. Buttons for 'OK', 'Cancel', 'Apply', and 'Help' are at the bottom.

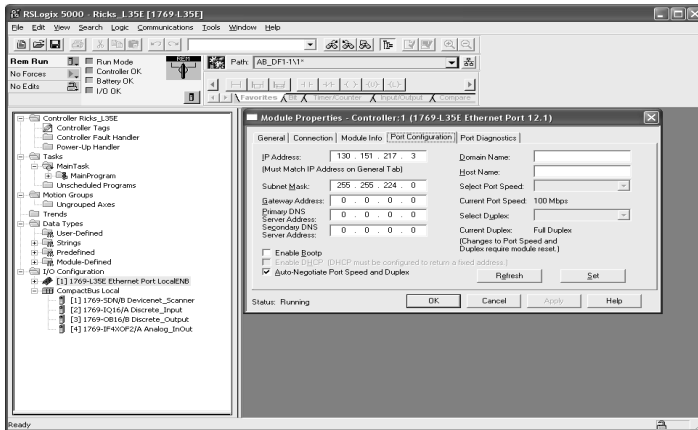
Field	Value
IP Address:	10 . 88 . 60 . 120
Network Mask:	255 . 255 . 254 . 0
Gateway Address:	10 . 88 . 60 . 1
Primary Name Server:	0 . 0 . 0 . 0
Secondary Name Server:	0 . 0 . 0 . 0
Domain Name:	
Host Name:	

Using RSLogix 5000 software to set the IP address

You can use RSLogix software, version 12 or higher, to set the IP address.

1. Make sure the controller that uses the IP address is installed and running.
2. Connect to the controller via the serial connection (see page 11).

3. Start RSLogix 5000 software. In the Controller Organizer, select properties for the Ethernet port.



4. Select the Port Configuration tab and specify the IP address and click Apply. Then click OK.

This sets the IP address in the hardware. This IP address should be the same IP address you assigned under the General tab.

Install the Appropriate EDS Files

If you are using RSLogix version 2.41.00, there are several EDS files that you need to manually install before programming the controller through RSLogix 5000 programming software. The files are:

- 0001000E00410100.eds for the 1769-L35E controller
- 0001000E00410C00.eds for the 1769-L35E controller
- 0001000C00780100.eds for the 1769-L35E Ethernet port
- 0001000C00780C00.eds for the 1769-L35E Ethernet port
- 0001006C005B0100.eds for the 1769 CompactBus
- 0001000C00470C00.eds for the 1769 local adapter
- 0001000C00690200.eds for the 1769-SDN scanner module.

IMPORTANT

All of these EDS files are required for the 1769-L35E system to operate correctly.

To install the EDS files:

1. Locate the appropriate EDS files and copy all the files to a temporary subdirectory on your hard drive.

The EDS files are available on the RSLogix 5000 software CD.

You can also download the EDS files from the web. Get each file at the associated URL listed in the following table and save all the files to the same location on your hard drive. Exit the web browser after all the files have been saved.

For:	Download this file:
1769-L35E controller	<ul style="list-style-type: none"> • 0001000E00410100.eds at: http://www.ab.com/networks/eds/XX/0001000E00410100.eds • 0001000E00410C00.eds at: http://www.ab.com/networks/eds/XX/0001000E00410C00.eds
1769-L35E Ethernet port	<ul style="list-style-type: none"> • 0001000C00780100.eds at: http://www.ab.com/networks/eds/EN/0001000C00780100.eds • 0001000C00780C00.eds at: http://www.ab.com/networks/eds/EN/0001000C00780C00.eds
1769 CompactBus	<ul style="list-style-type: none"> • 0001006C005B0100.eds at: http://www.ab.com/networks/eds/XX/0001006C005B0100.eds
1769 local adapter	<ul style="list-style-type: none"> • 0001000C00470C00.eds at: http://www.ab.com/networks/eds/XX/0001000C00470C00.eds
1769-SDN	<ul style="list-style-type: none"> • 0001000C00690200.eds at: http://www.ab.com/networks/eds/DN/0001000C00690200.eds

2. Install the EDS files.

Use the EDS Hardware Installation tool. It is installed with RSLinx software under the RSLinx Tools directory. It is also installed with RSLogix 5000 software under the Utils directory.

- a. Shutdown all applications that use RSLinx, then shutdown RSLinx.
- b. Start the EDS Hardware Installation Tool by selecting:
Start->Programs->Rockwell Software->Tools->EDS Hardware Installation Tool.
- c. Follow the on-screen instructions. Make sure to select **Register a directory of EDS files** and point to the directory you saved all the above EDS files.

Load the Controller Firmware

The controller ships without working firmware. You must download the current firmware before you can use the controller. To load firmware, you can use:

- ControlFlash utility that ships with RSLogix 5000 programming software.
- AutoFlash that launches through RSLogix 5000 software when you try to open or create a project and the controller does not have the current firmware.
- a 1784-CF64 CompactFlash card with valid memory already loaded.

The firmware is available with RSLogix 5000 software or you can download it from the support website:

1. Go to <http://.support.rockwellautomation.com>
2. In the left column (frame), select Firmware Updates under Technical Support
3. Select the firmware revision.

The download process will require you to enter the serial number of your RSLogix 5000 programming software.

If you load (flash) controller firmware via the ControlFlash or AutoFlash utilities, you need either a serial or EtherNet/IP connection to the controller. Flashing via an EtherNet/IP connection is faster than the serial connection. The controller's EtherNet/IP configuration settings are maintained during a flash process.

Using ControlFlash to load firmware

You can use ControlFlash to load firmware through either an Ethernet connection (an IP address must already be assigned to the Ethernet port) or a serial connection.

1. Make sure the appropriate network connection is made before starting.
2. Start the ControlFlash utility. Click Next when the Welcome screen appears.
3. Select the catalog number of the controller and click Next.
4. Expand the network until you see the controller. If the required network is not shown, first configure a driver for the network in RSLinx software.

If you use an Ethernet connection to load the firmware (which is much faster than the serial connection), the utility will ask for a valid IP address before connecting to the controller.

5. Select the controller and click OK
6. Select the revision level to which you want to update the controller and click Next.
7. To start the update of the controller, click Finish and then click Yes.
8. After the controller is updated, the status box displays *Update complete*. Click OK.
9. To close ControlFlash software, click Cancel and then click Yes.

Using AutoFlash to load firmware

You can use AutoFlash to load firmware through either an Ethernet connection (an IP address must already be assigned to the Ethernet port) or a serial connection.

1. Make sure the appropriate network connection is made before starting.
2. Use RSLogix 5000 programming software to attempt to create a controller project. This automatically launches AutoFlash.
3. Select the catalog number of the controller and click Next.
4. Expand the network until you see the controller. If the required network is not shown, first configure a driver for the network in RSLinx software.

If you use an Ethernet connection to load the firmware (which is much faster than the serial connection), the utility will ask for a valid IP address before connecting to the controller.

5. Select the controller and click OK
6. Select the revision level to which you want to update the controller and click Next.
7. To start the update of the controller, click Finish and then click Yes.
8. After the controller is updated, the status box displays *Update complete*. Click OK.
9. To close AutoFlash software, click Cancel and then click Yes.

Using a CompactFlash card to load firmware

If you have an existing 1769-L35E controller that is already configured and has firmware loaded, you can store the current controller user program and firmware on CompactFlash and use that card to update other controllers.

1. Use RSLogix 5000 software to store the controller user program and firmware of a currently configured 1769-L35E controller to the CompactFlash card.

Access the Nonvolatile Memory tab of the Controller Properties dialog. Make sure to select Load Image On Powerup when you save to the card.

2. Remove the card and insert it into a 1769-L35E controller that you want to have the same firmware and controller user program.
3. When you power up the second 1769-L35E controller, the image stored on the CompactFlash card is loaded into the controller.

Load 1769-SDN Firmware

If you are using a 1769-SDN scanner for DeviceNet communications and want to take advantage of the new explicit messaging feature, you must also upgrade the scanner's firmware to revision 2.2 or later. The updated firmware is available with RSLogix 5000 software or you can download it from the support website. Use the ControlFlash utility (as described above) to load the firmware.