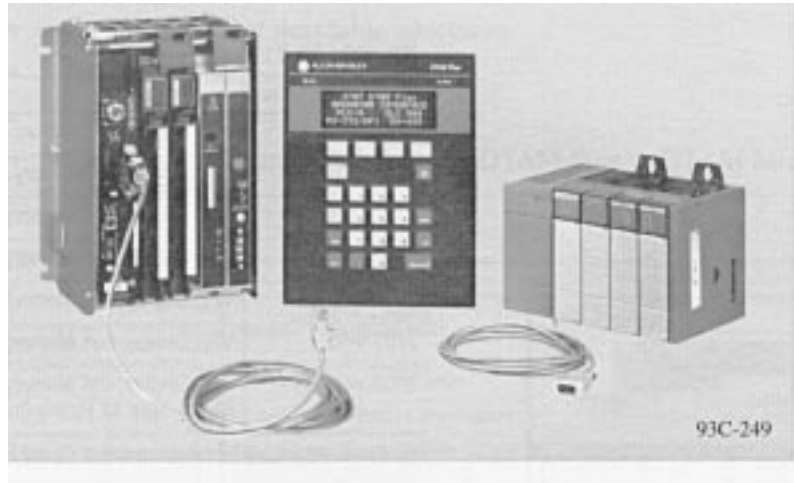




Bulletin 2707 DTAM Plus Operator Interface

Product Data



Overview

The DTAM Plus devices offer a highly functional operator interface to both Allen-Bradley PLC® and SLC™ processors. This proven interface provides operators with the convenience and flexibility needed to monitor and manipulate process data from the plant floor. Connect the DTAM Plus to the SLC family of processors via DH485 network or point-to-point modes. You can also communicate remote I/O via a 1747-SN subscanner. The PLC-5 family of processors can communicate via remote I/O or DF1 through Channel 0 RS-232/RS-422. Just a few features and benefits:

8K or 40K Memory Option

Supports approximately 50 or 244 screens of data. Screens display data table information, show alarm conditions and prompt an operator through a series of tasks.

Monitors Continuous Changes in Process Data

Alarm screens allow the operator to monitor critical areas of the data table, comparing actual data to preset limits. When an alarm condition occurs the operator is prompted to take immediate action.

Recipe Function

Allows an operator to modify blocks of data quickly. Data can be downloaded to a maximum of 10 non-sequential register addresses per screen. Multiple screens can be linked as part of one recipe.

Available with an LCD or VFD Display

Both display types feature a 4 line x 20 character display window providing high reliability and superior readability in all light conditions.

ASCII Input Capability

Allows ASCII data input, such as bar code data, through the optional RS-232 printer port.

Ability to Write the Screen Number back to the PLC

Allows the PLC to know at all times where the user is in the menu structure.

DTAM Plus Options

Various options are available when ordering the DTAM Plus. For example, the DTAM Plus is available with 8K or 40K memory, with backlit LCD (Liquid Crystal Display) or VFD (Vacuum Fluorescent Display) window, two power supply options, and a standard printer port and real time clock on 40K memory units. The table below lists the different variations of the DTAM Plus, as well as accessory items:

RS-485 / RS-232 Versions

Catalog Number	Description ①
2707-L8P1	LCD Display, 8K Memory, P1 Power Supply
2707-L8P2	LCD Display, 8K Memory, P2 Power Supply
2707-L40P1	LCD Display, 40K Memory, Printer Port, Real Time Clock, P1 Power Supply
2707-L40P2	LCD Display, 40K Memory, Printer Port, Real Time Clock, P2 Power Supply
2707-V40P1	VFD Display, 40K Memory, Printer Port, Real Time Clock, P1 Power Supply
2707-V40P2	VFD Display, 40K Memory, Printer Port, Real Time Clock, P2 Power Supply
2707-V40P2N	VFD Display, 40K Memory, Printer Port, Real Time Clock, P2 Power Supply NEMA Type 4X Rating (Indoor Use Only)

① See Specifications for voltage ranges of P1 and P2 Power Supplies.

Remote I/O Versions

Catalog Number	Description ①
2707-L8P1R	LCD Display, 8K Memory, P1 Power Supply ②
2707-L8P2R	LCD Display, 8K Memory, P2 Power Supply ②
2707-L40P1R	LCD Display, 40K Memory, Printer Port, Real Time Clock, P1 Power Supply ③
2707-L40P2R	LCD Display, 40K Memory, Printer Port, Real Time Clock, P2 Power Supply ③
2707-V40P1R	VFD Display, 40K Memory, Printer Port, Real Time Clock, P1 Power Supply ③
2707-V40P2R	VFD Display, 40K Memory, Printer Port, Real Time Clock, P2 Power Supply ③
2707-V40P2NR	VFD Display, 40K Memory, Printer Port, Real Time Clock, P2 Power Supply NEMA Type 4X Rating (Indoor Use Only) ③

① See Specifications for voltage ranges of P1 and P2 Power Supplies.

② Has selectable RS-485 / RS-232 port for uploading and downloading application files or firmware upgrades.

③ Printer port is also used for uploading and downloading application files or firmware upgrades.

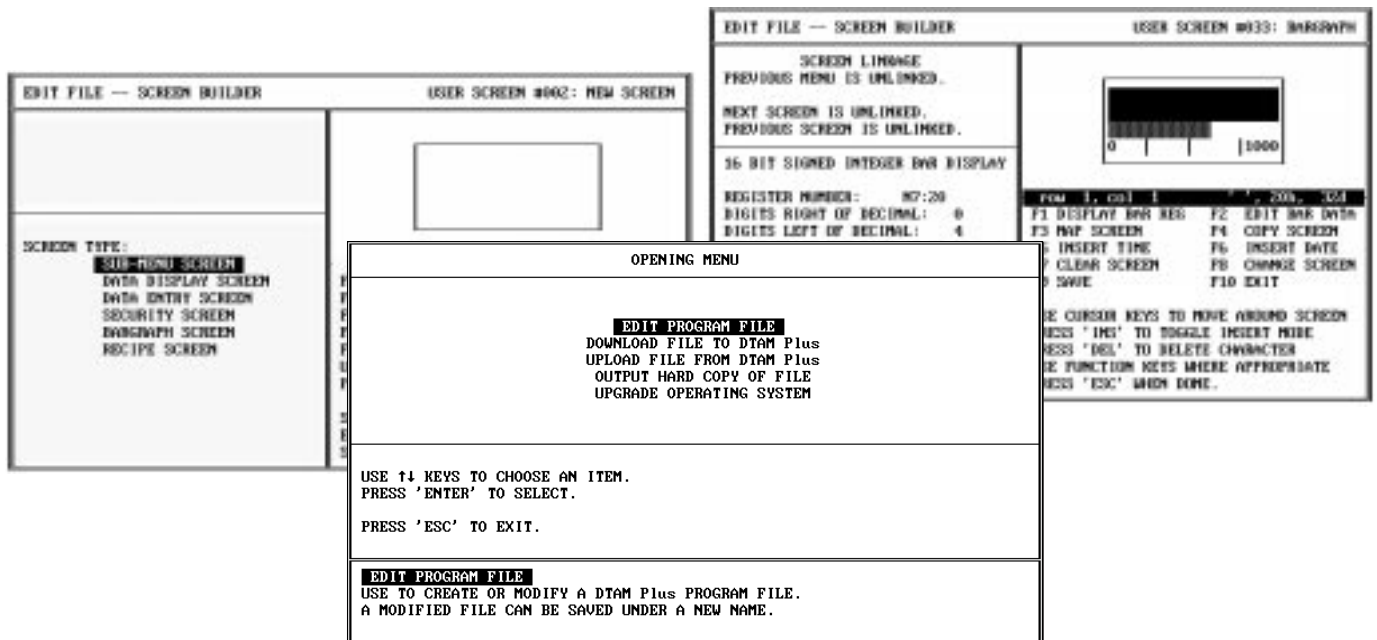
Accessories

Catalog Number	Description
2707-NC1	Cable, DH485 Network Interface
2707-NC2	Cable, RS-232C Program Upload/Download
2707-NC3	Cable, DF1 RS-232C Interface
2707-NC4	Cable, DF1 RS-422 Interface
2707-NC5	Cable, RS-485 Upload/Download
2707-NC6	Cable, Bar Code Interface, connects to Allen-Bradley bar code scanners (Catalog No. 2755-G3-D, -G6-D)
2707-NP	Offline Software Development Package

**Offline Software
 Development Package
 (Catalog No. 2707-NP)**

Use the Offline Software Development Package (Catalog No. 2707-NP) to create application screens for the DTAM Plus or DTAM Micro. Use this software to:

- create data display, bar graph, data entry and alarm screens
- create menu and submenu screens
- setup monitoring of data table addresses
- define printer forms
- upgrade operating systems (firmware)
- set configuration parameters for both DTAM Plus or DTAM Micro operator interfaces



This software package is available on a 3½ inch (720K) disk and runs on IBM AT or a compatible system with a minimum of 640K RAM.

Application screens are developed in a flow chart manner and then linked by the user to facilitate a logical flow of data displays or operator prompts. Easy to understand menu prompts guide the user through the programming steps. For more details on the Offline Programming Software, refer to Publication 2707-801.

User-created application programs are easily downloaded to the communications port of the DTAM Plus using RS-485 or RS-232. Programs can also be downloaded via the printer port on 40K memory units. Programs are downloaded with the applicable operating system for proper operation with the SLC processor (AB DH485), the 1746-BAS module (AB BASIC), 1747-SN Subscanner (Remote I/O) or a PLC (PLC-5 DF1) or (Remote I/O).